

P-manifold

- for CD07

- 5/2 and 5/3-directional valves



Compressed air connection	according to ISO 228-1
Working pressure min./max.	-13 ... 232 psi
Ambient temperature min./max.	-13 ... 176 °F
Medium temperature min./max.	-13 ... 176 °F
Medium	Compressed air
Exhaust (3,5)	uncollected exhaust
Weight	See table below

Technical data

Part No.	Compressed air connection Input [1]	Number of valve positions	Weight
3337120222	Ø 10x1	2	0.611 lbs
3337120232	Ø 10x1	3	0.745 lbs
3337120242	Ø 10x1	4	0.884 lbs
3337120252	Ø 10x1	5	1.02 lbs
3337120262	Ø 10x1	6	1.15 lbs
3337120272	Ø 10x1	7	1.31 lbs
3337120282	Ø 10x1	8	1.41 lbs
3337120292	Ø 10x1	9	1.55 lbs
3337120302	Ø 10x1	10	1.7 lbs
3337120312	Ø 10x1	11	1.81 lbs
3337120322	Ø 10x1	12	2.02 lbs

Technical information

The min. control pressure must be adhered to, since otherwise faulty switching and valve failure may result!

The pressure dew point must be at least 27 °F under ambient and medium temperature and may not exceed 5.4 °F .

The oil content of compressed air must remain constant during the life cycle.

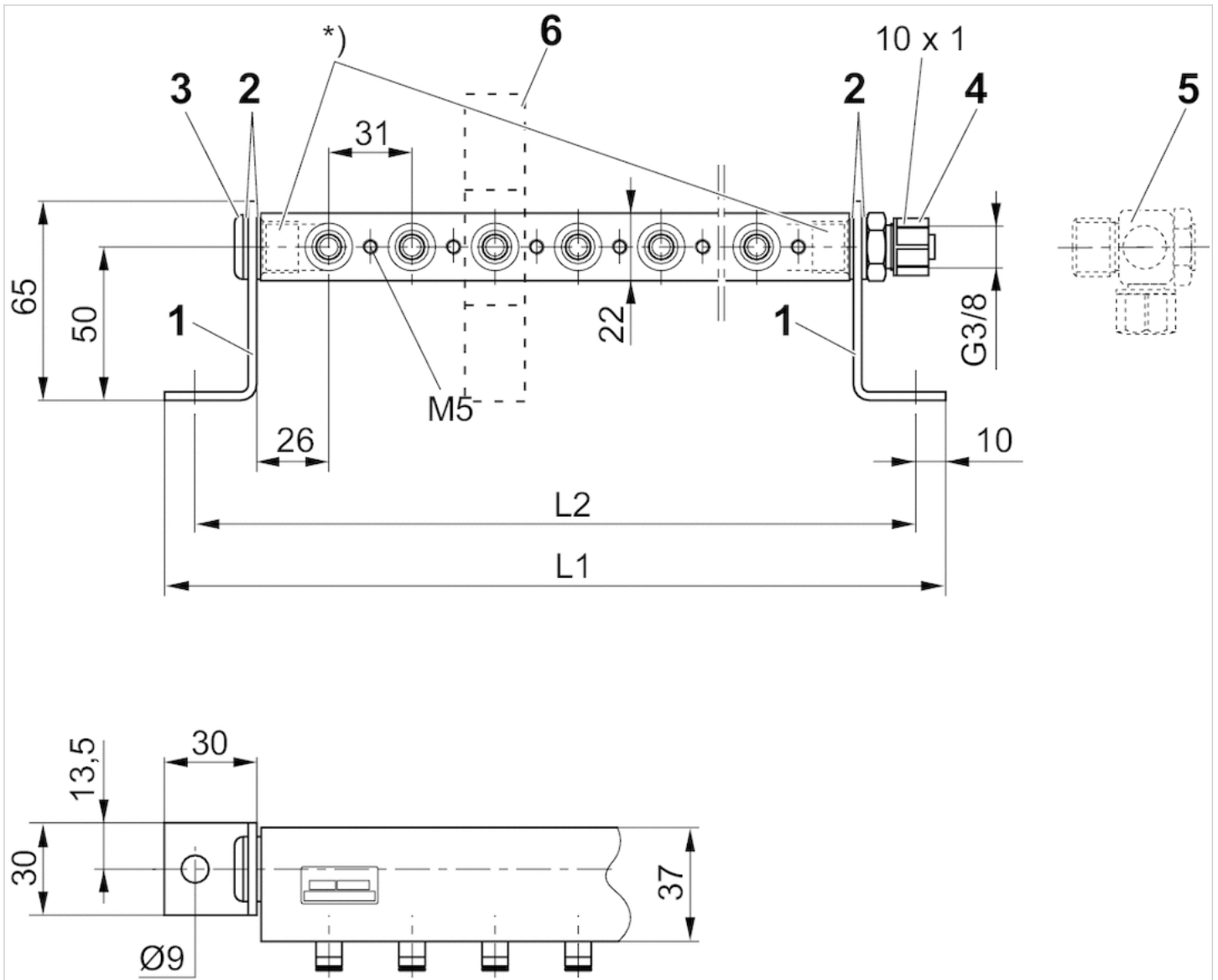
Use only the approved oils from AVENTICS. Further information can be found in the "Technical information" document (available in the MediaCentre).

Technical information

Material	
Base plate	Aluminum Polyoxymethylene
Seal	Acrylonitrile butadiene rubber
Mounting bracket	Steel

Dimensions

Dimensions



Angled bracket (1), seal DIN 7603 AI (2), blanking screw G 3/8 ISO 228/1 (3), push-in fittings G 3/8 ISO 228/1, diameter 10x1 (4), valve mounting screws (depending on the valve used): washer, screw, O-ring must be ordered separately: push-in fittings (5)

* Only use fittings with max. length of thread engagement equal to 12 mm.

Dimensions

Part No.	L1	L2
3337120222	152	132
3337120232	183	163
3337120242	214	194
3337120252	245	225
3337120262	276	256
3337120272	307	287
3337120282	338	318
3337120292	369	349

Part No.	L1	L2
3337120302	400	380
3337120312	431	411
3337120322	462	442